



**SYNLAB**



**LEADING MEDICAL  
DIAGNOSTICS PROVIDER**

**In Europe and beyond**

”

You are at the centre of everything we do. Every day, SYNLAB experts all around the world conduct, analyse and evaluate samples to provide you with a solid and reliable basis for the best possible therapy decisions.

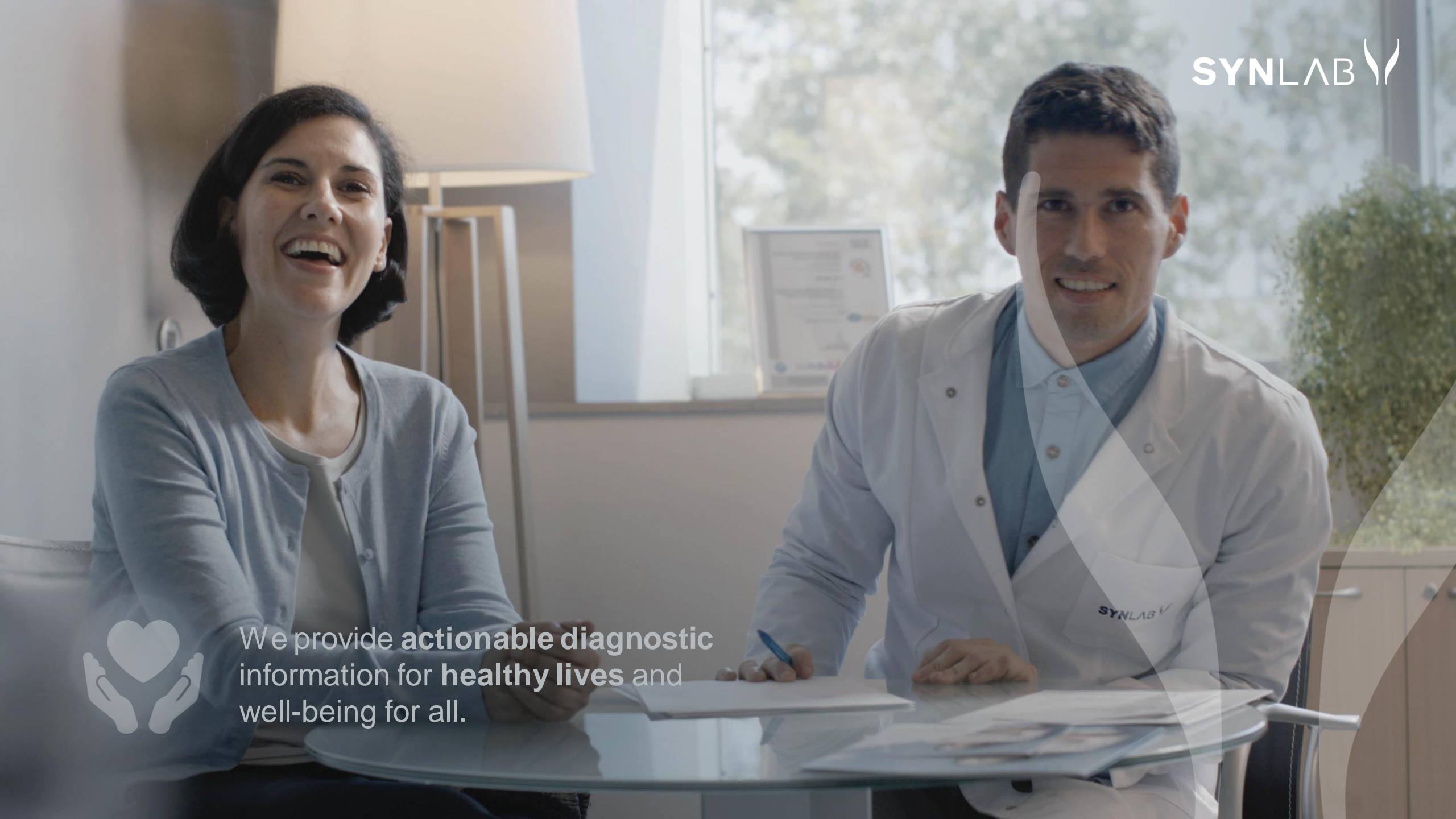
Since the importance of healthcare is continuously increasing, we believe the approach of personalised diagnostics is the only way to allow for medical excellence that provides a substantial added value and ultimately contributes to your health.

*Mathieu Floreani, CEO SYNLAB Group*





We provide **actionable diagnostic** information for **healthy lives** and well-being for all.



**2,000+**  
medical experts  
network

**2,000+**  
blood collection  
points

**>450**  
laboratories

**700+**  
hospital  
cooperations

**~600 m**  
laboratory tests  
per year

**>27,000**  
employees



## LEADERSHIP THROUGH EXCELLENCE WORLDWIDE

As a leader in medical diagnostic services, the SYNLAB network operates in more than 30 countries on four continents to provide you with access to the most reliable and innovative diagnostic services.

30+  
COUNTRIES







## LIVING OUR PURPOSE

Our ESG strategy supports our mission to provide actionable diagnostic information for healthy lives and well-being for all and our vision to lead through excellence in service to patients and the medical community with reliable and high-quality diagnostics and value-added services.

## ESG at SYNLAB



**SYNLAB  
CARE**



**SYNLAB  
GREEN**



**SYNLAB  
CITIZENSHIP**





## LIVING OUR PURPOSE – OUR FOCUSED APPROACH FOR A RESPONSIBLE FUTURE



INCREASE SOCIAL  
ROLE

**SYNLAB CARE**

- Creating the greatest positive outcomes in the communities we work in through innovative, high-quality diagnostics & empowering our diverse employees.
- Key topics:
  - ✓ Ensuring excellence in diagnostics
  - ✓ Talent attraction, development & retention
  - ✓ Employee engagement, empowerment & well-being
  - ✓ Diversity Equity and Inclusion



REDUCE ENVIRONMENTAL  
FOOTPRINT

**SYNLAB GREEN**

- Reducing the environmental impact of services, we deliver and always striving to protect the environment.
- Key topics:
  - ✓ Low carbon transition
  - ✓ Environmental management (e.g. Waste management; Improving energy and space efficiency)



CONTINUE FOCUS ON FAIR  
MARKET PRACTICES

**SYNLAB CITIZENSHIP**

- Advancing public health through responsible corporate citizenship and operating with the highest standards of governance and compliance.
- Key topics:
  - ✓ Addressing public health risks
  - ✓ Data privacy
  - ✓ Cybersecurity
  - ✓ Responsible supply chain management

# MEDICAL EXCELLENCE FOR YOUR HEALTH

## WHAT WE DO?

- Provide diagnostic services to patients, physicians, hospitals, institutions and companies
- Collect samples, move them to centralised testing locations where we perform analytics, and then return results in a fast, accurate and reliable manner
- Provide value-add medical consultation services for interpretation of results and support of medical decisions
- Business is adaptable to local regulations and business models
- We focus on customer centric medical excellence



## WE SUPPORT YOU EVERY STEP OF THE WAY

### 1 PREVENTION

Detecting potential phenotypic developments and genetic predispositions that suggest a higher vulnerability for certain diseases or help to identify specific health risks.



### 2 DIAGNOSIS

Our various medical diagnostic services allow for an early detection of potentially severe illnesses to avoid painful and exhausting treatments, and instead improves patient care.



### 3 PROGNOSIS

Determining the course of an illness is crucial in effective treatment control. Together with your treating physician, we suggest suitable therapy options to improve your health.



### 4 TREATMENT CONTROL

During ongoing treatment, the continuous use of medical diagnostics is an important measure to improve quality of life by facilitating the management of the disease.



## “CUSTOMER JOURNEY” - EXPERTISE FOR EVERY SITUATION

### 1 ADVISING

Before the start of any tests, treatments or therapies, we provide you or your doctor with counselling and advice on the different options for medical diagnostics that apply to your specific case.

### 2 TESTING

After defining the best medical diagnostic services for your needs, we proceed with the actual testing:

- ✓ Samplings, which can range from throat or nose swabs to blood samples.
- ✓ Internal logistics ensures a fast, safe and reliable shipment of your samples.
- ✓ Medical experts apply state-of-the-art analytical processes and methods and evaluate every test result individually.

### 3 INTERPRETATION AND CONSULTATION

After testing, we provide you and your doctor with the results and clear interpretations and recommendations for your differential diagnosis. Our interdisciplinary medical experts are available for individual counselling to further discuss therapy decisions if needed.

## CASE STUDY KNOWLEDGE AVAILABLE EVERYWHERE



We are able to offer our state-of-the-art expertise across our global network, even to a family from a small town in Romania



At a clinic in Bucharest, Romania, a family is worried about the development of their child. Doctors have not been able to diagnose her condition. Very often conditions like this are genetic, so SYNLAB Romania consulted our geneticists.



## CASE STUDY

Cases like this are very hard to diagnose, because there are thousands of conditions that might be responsible, and until recently a lot of them would remain undiagnosed. But in Mannheim, we now have the capability to run a **complete genetic sequence on a patient** – so if there is a genetic variation, we'll find it.

SYNLAB Romania arranged for the family to see a genetic counsellor. Then a blood sample was sent to Mannheim, where it was run on SYNLAB's high-throughput sequencing platform.

In this case, we **diagnosed a condition so rare, most doctors will never have seen a patient with it**. We were able to give a diagnosis, and help the doctor and the family to understand the implications.

## CASE STUDY CARMEN'S FIGHT AGAINST CANCER



**SYNLAB diagnostics enables us to give our patients the best treatments.**

Dr. Marisa Torres | Medical Oncologist

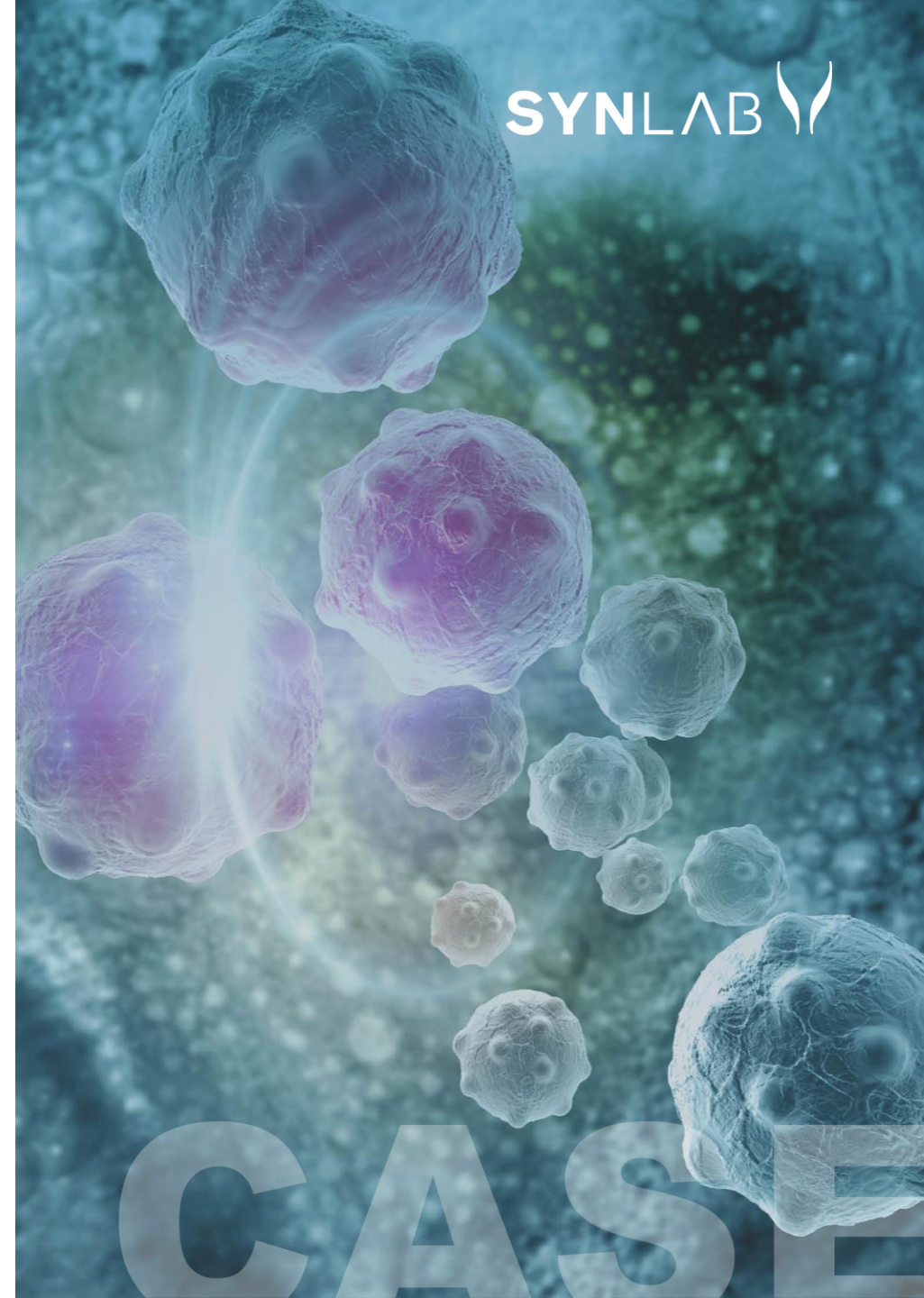


Carmen is a 63-year old agile and active woman. When she was diagnosed with advanced lung cancer, Carmen went to see medical oncologist Dr Torres, and together they decided on a targeted therapy that was initially very effective, but after two years Carmen's situation suddenly worsened significantly.

## CASE STUDY

To better understand this change in Carmen's state of health, Dr Torres called SYNLAB's Dr Garcia and his team to explore the full range of diagnostic options. Dr Garcia suggested an innovative liquid biopsy; an ultra-sensitive test that is able to detect the DNA from a tumour through blood samples, thus avoiding any surgical procedures and providing highly detailed insights.

The biopsy results suggested that Carmen became resistant to her prior therapy. Based on the very precise analysis derived from the biopsy, Dr Torres had a clear picture of Carmen's specific form of cancer and could recommend an alternative therapy. After only a short time, Carmen's symptoms and suffering decreased while her quality of life significantly increased again.





## INNOVATIVE HEALTHCARE SOLUTIONS FOR YOU

We want the best for you. Always and in everything we do. We continuously invest in our people, know-how, and medical technology to ensure medical excellence and integrity throughout the entire SYNLAB network.



Easy access to the state-of-the-art diagnostic services for patients



Access to high-quality, innovative medical diagnostics for prescribing doctors



Helping healthcare professionals make the right decisions



Supporting employers to care for their employees

## OUR NETWORK FOR YOUR HEALTH AND WELL-BEING

We offer you the most advanced services in every diagnostic category for the benefit of you and your health.

- ✓ 5,000+ routine and specialist testing services
- ✓ Easy access to more than 1,800 blood collection points
- ✓ Fast and user-friendly online ordering
- ✓ Direct-to-consumer services and panels



## GLOBAL COOPERATION FOR HEALTH AND SAFETY

Backed by our team of international experts in 30 countries on four continents, we combine knowledge and expertise in international partnerships and joint projects with:



### SYNLAB Academy

SYNLAB Academy provides prescribing doctors and healthcare professionals with regular trainings and practical guidance on medical innovations, establishing a strong network that serves your needs.

### GDN

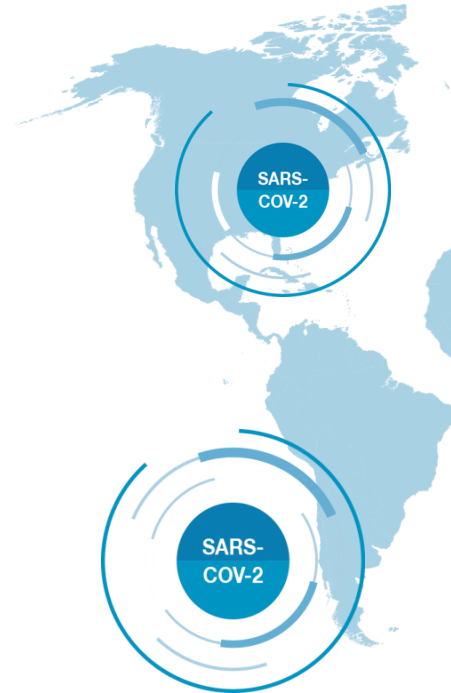
Together with other leading diagnostic services providers, we established the Global Diagnostics Network (GDN), to share expertise and insights to drive worldwide diagnostics innovation.

## OUR SARS-COV-2 PANDEMIC RESPONSE

SYNLAB is part of the critical infrastructure in many countries and acts as a trusted medical partner and adviser to key decision-makers.

For the past years, we have tested for SARS-CoV-2 worldwide, offering:

- **RT-PCR testing** to identify existing infections
- **Serological antibody testing** and antigen testing
- **Pain-free sampling methods**, such as mouthwash and saliva sampling
- **Sequencing of positive SARS-CoV-2 samples** in order to identify possible mutant variants.



In the fight against a pandemic, fast and reliable testing plays an essential role.

## HOW TO REACH US?

### CONTACT DETAILS FOR YOUR COUNTRY

Organisation name

Street name 123

1000 City

State

Tel. +000 00 000 000

For more information, please contact [xx@synlab.com](mailto:xx@synlab.com)





**SYNLAB International GmbH**

Moosacher Strasse 88

80809 Munich

Germany

Tel. +49 89 307602-0

Fax +49 89 307602-190

[www.synlab.com](http://www.synlab.com)

© 2023 SYNLAB International GmbH

No liability for errors, mistakes and incorrect price data. Changes reserved. All texts, images and contents are under copyright of SYNLAB International GmbH.